

Student Guide 2021



Kimberley School

Student Guide 2021

Welcome 3

People You Need to Know 4

Your First Day 5

Uniform 6

The School Day 8

The School Code 9

Achievement and Behaviour 10

Extra-curricular & the LRC 11

Your Lessons 12

Induction 13

School Map 14

Welcome



I'm delighted you have chosen The Kimberley School as your new school for next year. My name is Mr George and I'm the Head Teacher. If you want to have exciting experiences and fascinating lessons which help you to do your best, then you're coming to the right place. I can't wait to meet you in September at the start of your amazing secondary school adventure. All the other teachers and staff here are looking forward to seeing you too.

You'll get to know everyone really quickly. At this school we help each other out and take a great pride in our own achievements, but we think it is just as important to enjoy the success of others. That way we all enjoy doing well.

Of course, we all hope to see you before then at our Induction Club where you can find out more about the school, your new friends and have a lot of fun at the same time.

I really hope you're looking forward to next year as much as I am.

Mr George
Head Teacher

Messages from our Current Year 7 Students:



Holly Mott (7N EW)

What I like about The Kimberley School is how friendly the teachers are. They are always there if you need to talk about anything. There are so many subjects to enjoy! I have made lots of new friends since starting in September.



Luke Dye (7B KSC)

In my opinion, I believe The Kimberley School is amazing! There are a large range of subjects we don't get to study at primary school; my favourite subjects have changed massively since Year 6. The wide range of subjects and the really nice teachers have really helped me settle in.



Brandon Innes (7C CS)

When I started Kimberley I was really nervous. In the first week I loved it, I met new friends from other schools and found that the teachers are really nice. Starting Year 7 does seem really scary but I felt very welcomed from all the staff. Good luck!

People You Need to Know



Mr Tuck Performance Leader (Year 7)

My job as Year Performance Leader is to help you achieve your best during your time at Kimberley. I will be in charge of your year group until you leave Year 11. I work closely with the rest of the Year 7 Pastoral Team as well as your tutors and teachers to ensure your achievement, behaviour and attendance remain excellent. In September, my main aim is to help you settle in to Kimberley School. I look forward to meeting you in September.



Miss Hanks Assistant Performance Leader (Year 7)

I work alongside Mr Tuck and Miss Levett to support your day-to-day life at Kimberley. In addition, I oversee the achievement of the year group and ensure that your hard work is recognised. I cannot wait to see all the fantastic work you complete, as well as all the positive things you achieve whilst here at Kimberley School. See you in September!



Miss Levett Student Support Assistant

I am the Student Support Assistant for Year 7, I work closely with Mr Tuck and Miss Hanks as part of the Pastoral Team. All of the staff in the Student Support Team are non-teachers who are there to help you be happy and successful at The Kimberley School. We are based in an area of the school called Student Support. We are here to help you if you are unwell or feeling worried about anything. I look forward to meeting you in September!



Mr Farnsworth Student Support Receptionist

I am the Student Support Receptionist here at The Kimberley School; I run a reception dedicated to supporting our students. You will come to see me in Student Support if you feel ill, need to leave for an appointment, or require support within school. Student Support Reception is in the same building as the Year 7 Office, so you will also speak to me if you need to see Mr Tuck, Miss Levett or Miss Hanks.

Tutor Groups

When you join us in September, you will be placed into a tutor group. We try to make sure you are in a tutor group with a person that you already know. You will stay in this tutor group throughout your five years at The Kimberley School. Each tutor group has a tutor who will get to know you very well. They are your first port of call if you are having any problems in school that you need to talk about, and work very closely with Mr Tuck and Miss Hanks to make sure you are achieving the best you can. You will see your tutor every morning for 10 minutes at the start of every day, when they will check you have the correct uniform and have all the equipment you need to learn. Your tutors will also be responsible for delivering your Personal Development lessons (Tuesday Period 3) where you will learn about Rights, Responsibilities & British Values, Celebrating Diversity & Equality, Relationships & Sex Education, Staying Safe Online & Offline, Health & Well-Being and Life Beyond School.

Your First Day

How will the first day start?

You will need to arrive at school before 8.45am when a bell will ring, at which point you need to make your way to Hall 1; there will be plenty of staff who will help you find your way. You will sit with your tutor group and Mr Tuck (Performance Leader – Year 7), Miss Hanks (Assistant Performance Leader – Year 7) and senior staff will welcome you. You will spend the rest of the morning with your tutor group and tutor where you will be given your timetable. Your tutor will spend time with you explaining the school's expectations, as well as what makes a perfect Kimberley School student. You will also have time to ask questions and meet new friends.

The rest of the first day

In the afternoon, you will have lessons so please bring a pen, pencil, ruler and rubber with you. You should also bring your trainers just in case you have PE.

What will I need on the first day?

- A good large, strong bag for carrying belongings
 - Pen, pencil, ruler and rubber
 - Bus fare if you catch a bus to and from school
 - Trainers just in case you have PE
 - A packed lunch if you are bringing food from home.
- You may also wish to bring some food for morning break



What to bring after the first day

A good large strong bag for carrying your equipment Bus fare if you need it Books and equipment that you will need for your lessons - check your timetable every night to see what equipment you need for the following day.

Basic School Equipment

- Pens (blue/black ink)
- Pencils/coloured pencils
- Ruler
- Pencil sharpener
- Scientific calculator

The Journey to School

Many students travel by bus and your behaviour should be of the highest standard at all times. You do not have an automatic right to travel by bus and the bus company can ban you from travelling with them if your behaviour is not acceptable. Remember, by poor behaviour you let down not only the school but also your family and yourself.

If you walk or cycle to school, give yourself plenty of time to travel safely; take care when crossing roads and always use zebra or pelican crossings where you can. Don't travel home at night or in quiet empty areas on your own and never speak to someone you don't know.

If you cycle, make sure your bike is roadworthy and that you wear a helmet and brightly coloured clothing. You will not be allowed to ride a bike to school if you do not wear a helmet. You will need a lock to secure your bike at school.

Uniform

Skirt

The skirt should be touching the top of the knee. The skirt must be purchased from School wear solutions.

School Skirt



✓ **Perfect length**



✗ **Too Short**



Trousers

Plain black school trousers bootleg or straight cut

✓ **Perfect shape**



None of the following

Skinny trousers, jeans, denim or stretch material.

✗ **Too tight, with zips or logos**



Uniform

Footwear

Perfect style



X None of the following are acceptable as school shoes



No colours, no boots, no heels, no logos

We are very proud of our uniform at the Kimberley School and in order to ensure the uniform is worn correctly every child in school is given a SMART card. This is a card that they must carry around with them at all times. The card is marked if an item of clothing is not correct, 3 strikes and a lunchtime detention is automatically given. If the card is lost or missing, then a detention is awarded.

The majority of children never have a detention for incorrect uniform or missing cards.

The School Day

| | |
|----------|---------------|
| 8.45 am | Gates Close |
| 8.50 am | Registration |
| 9.00 am | Period 1 |
| 10.05 am | Period 2 |
| 11.05 am | Break |
| 11.20 am | Period 3 |
| 12.20 pm | Lunch |
| 1.00 pm | Period 4 |
| 2.05 pm | Period 5 |
| 3.05 pm | End of School |



Lateness

- We expect you to be in school before 8.45 and in your tutor room and ready for registration at 8:50am every morning, and on time to all your lessons.
- We shut the school gate at 8:45am every morning; which is signalled by a bell. If you are late 3 times in a week you will receive a detention from Mr Tuck.
- If you are persistently late then you will be punished further, and may have to spend a day in the Pre Exclusion Unit.

Break / Lunchtimes

- All students must stay on the school premises at lunchtime and have a school lunch or bring sandwiches from home.
- The school canteen serves a range of hot and cold food at breakfast, break and lunchtimes. The kind of food you'll be able to choose includes some of your favourites from primary school but also much more:
- We have a panini bar with at least 3 different fillings each day (e.g. beans and cheese, BBQ chilli beef and chicken tikka).
- We have a cold bar where we offer pasta salads, dipping pots, sandwiches, salad pots and wraps.
- These can be upgraded to a 'meal deal' with a drink, bag of crisps or fruit.
- We have a 'Love Joes' counter where we offer a different chicken dish each day (e.g. curry, wrap, burger, flatbread, burrito etc) in over 20 different flavours.
- We have a pizza bar where we serve margarita and pepperoni slices.
- If you want a healthy option, we also have a jacket potato bar where we offer a range of hot and cold fillings, served with freshly prepared salad.
- We are able to cater for dietary requirements such as gluten-free, vegan, dairy free if you ask in advance. If you want to bring in sandwiches from home, there is a room where you and your friends can eat them indoors at lunch time.

The School Code

The Kimberley Diamond Rules

- Arrive at lessons on time
- Line up quietly for lessons
- Always wear your uniform correctly
- Sit where you are asked to in the classroom
- Always listen and follow the teacher's instructions
- Never stop others learning
- Bring the correct equipment for each lesson
- Do your best every day with every piece of work
- Respect all others
- Bullying of any kind is not tolerated
- Low level disruption is not tolerated (e.g. rocking on chairs, shouting out or chatting when the teacher is talking)



Bullying: A Charter of Student Rights

As a member of our school community you have the right:

- Not to be bullied
- To say 'no' firmly to anything you think is wrong
- To talk to somebody if someone is making you unhappy
- To protect yourself by ignoring others or by walking away

Remember, bullying may involve violence, name calling, graffiti, damage to property or even sneering, staring or ignoring.

If you feel bullied you should tell a member of staff as soon as you can – staff you could approach are your tutor, a subject teacher or a member of the student support team: whoever you feel comfortable speaking to.

Achievement and Behaviour

Achievement

In Years 7 to 11, you will be awarded IMPACT points for outstanding work, homework, effort, citizenship, literacy, contribution and extra-curricular participation. Every term, each year group has a special assembly in which the top 100 students are recognised for their achievements. Faculties will also award certificates to students who consistently perform well in lessons.

Behaviour

We take excellent behaviour in lessons and around school very seriously. You should always follow the instructions of staff the first time you are asked. In lessons you should listen to the teacher, complete all the work to the best of your ability and make sure you avoid distractions. At lunchtimes, midday supervisors are around school. You should treat them with respect at all times. You can help them by:

- Following their instruction immediately
- Keeping your table tidy at lunchtime
- Taking empty plates, knives, forks and spoons to the hatch when you have finished eating
- Putting any rubbish into the bin provided both in the canteen and outside.

If you fail to behave how we would expect, then you may be given a detention by a teacher or year performance leader. If your behaviour does not improve or is more serious, then you could be given a more serious consequence like a detention with a member of the senior leadership team, or you may be excluded from your lesson and expected to work at the back of another classroom.

Out of school, locally or away with a school group, you should remember that the school's reputation depends on the way you behave. We are very proud of our reputation, please don't spoil it!



Homework

Homework will be set regularly by each of your subject teachers. The school uses a system called Show my Homework which allows you and your parents/carers to see all the homework you have been set and when it is due in on the internet or through a mobile phone app. We expect all your homework to be completed on time and to a very good standard. Your tutor will have your PIN for SMHW.

Extra-Curricular

Extra-Curricular Activities and Clubs

The school runs a number of lunchtime and after-school activities that you might want to join.

Regular attendance will lead to you being invited on trips to exciting places, for example; the Snowdome.

Clubs change throughout the year, and your tutor will tell you all about the activities on offer at the start of each half-term.

Activities may include Table Tennis, Handball, Football, Basketball, Dodgeball, Badminton, Netball, Dance and more!



Learning Resource Centre (The LRC)

At The Kimberley School, you will find a big, impressive LRC full of exciting resources just waiting to be used and welcoming staff ready to help.

You will be able to use computers, read magazines, and newspapers in the LRC, and borrow books to take home (for 2 weeks).

You will take part in the Accelerated Reader programme, which means you take an online quiz each time you finish a book, competing with other students to see who can read the most words and take the most quizzes.

LRC Opening Times

- Open until 4 pm Monday—Thursday, 3.30pm Friday.
- Before school from 8.10am—8.45am for students who need to print out or complete their homework. The enquiry counter is closed in the morning
- During lessons for classes and private study for 6th form
- At lunchtime (apart from Tuesday's).

You may read, do school work, use computers or watch a film most lunchtimes, and on Friday lunchtimes you may play games if the behaviour has been good. Also, look out for special lunchtimes when you can take part in craft activities.

Your Lessons

When you arrive in September, you will study a range of subjects. The table below gives you an idea of what you might be studying:

| Subject | Lessons per fortnight | What will I be studying? |
|-----------|-----------------------|---|
| English | 7 | <p>You will read a variety of novels, short stories, poems, plays and non-fiction texts, and learn about a range of writing styles.</p> <p>In the first term of year 7, you will be studying the novel 'A Monster Calls.' You will also look at descriptive and narrative writing.</p> <p>You will have one lesson per fortnight in the LRC where you will work on reading.</p> |
| Maths | 7 | <p>You will continue studying a number of the topics you were introduced to at primary school including the number system, algebra, shape, space, ratio and handling data.</p> |
| Science | 6 | <p>In biology, you will look at cells, reproduction, ecosystems and the evolution of species.</p> <p>In chemistry, you will study particles, elements, reactions and materials, including acids, alkalis and the periodic table.</p> <p>In physics, you will look at forces and energy including light, sound, electricity, pressure, motion and magnetism.</p> |
| Languages | 5 | <p>You will study two languages from French, Spanish and German.</p> <p>In each language you will learn how to introduce yourself and talk about your family, pets and school subjects.</p> |
| Geography | 3 | <p>Geography is all about the people and places on the planet.</p> <p>In Year 7 you will be introduced to physical and human geography, the British Isles and rivers and flooding.</p> |
| History | 3 | <p>You will start off by looking at key skills in History. We will then begin studying the history of Britain including the Norman Conquest, life in the Middle Ages, the Black Death, the Tudors and the Stuarts.</p> |
| RE | 2 | <p>You will look at human beliefs and how people make sense of the world.</p> <p>In Year 7 you will study the major beliefs in Judaism, Christianity and Islam.</p> |
| Art | 2 | <p>You will study different styles and genres and a range of materials and techniques.</p> <p>You will start off by looking at mask making, and study artists such as Van Gogh.</p> |
| Drama | 2 | <p>You will look at a number of different styles of theatre and how our acting skills create different meanings onstage. We will begin by looking at a man called Bertolt Brecht, and how he makes plays with moral meanings.</p> |
| Music | 1 | <p>You will study a range of different musical genres.</p> <p>In the first term, you will look at rhythm, aural perception and learn basic keyboard skills. You will go on to further your keyboard skills and develop your ensemble performance skills.</p> |

Your Lessons (continued)

| | | |
|-----------------------|---|---|
| Design and Technology | 4 | <p>Your D&T lessons will be taught on a rotation, you will spend time in Graphics, Resistant materials, Food and Textiles. You will design and make a range of products with a variety of different materials and processes.</p> <p>In food you will create a number of dishes including a pizza, in textiles you will learn a number of machine and hand skills to create a sample booklet. In Resistant materials and graphics you will develop your designing skills and make a clock.</p> |
| Computing | 2 | <p>You will study;</p> <p>Using computers safely, effectively and responsibly (eSafety), Understanding computer hardware, software and communications, Computer crime and cyber security, Python programming, Computer networks and Kodu programming.</p> |
| PE | 4 | <p>You will take part in a number of indoor and outdoor activities including problem solving, team games (football, basketball, netball, etc...), and athletics.</p> |
| Personal Development | 2 | <p>In personal development you will be learning about your health and well-being and explore a range of topics that effect you, from puberty and what to expect to healthy friendships, politics to staying safe on and offline. We signpost where to find help and suggest how to deal with situations you might find yourself in, to ensure you stay safe and healthy and make healthy choices.</p> |

Induction

We know how hard it is to come to a new school so we want to make sure that you feel confident about joining us in September. To do this, we organise a number of events to help you get to know your new school, meet new people and make new friends.

- In June, we will visit all our feeder primary schools to speak to you about what to expect and answer any questions you might have.
- In July, there will hopefully be two induction days where you get to experience what a normal day at Kimberley will be like. You will get to meet the rest of your tutor group, and where possible, your tutor. You will also get the chance to meet some of the other important staff you will need to know. More information to follow as we continue to adhere to Government Guidance/COVID measures.
- If you're worried about coming to the Kimberley School, then don't be! If you do your best and follow our rules, then you have nothing to worry about. If you are still worried, ask your mum, dad or whoever looks after you to ring us and we will do everything we can to help you. We want you to be happy at The Kimberley School so please don't keep your worries to yourself tell us!
- We look forward to meeting you at our induction events.

Kimberley School Map

Ground Floor

Social Distancing Routes

Arts Block

Sports Hall

Sixth Form Centre

Lower School

Main School

Music Block

DT Block

Main Entrance

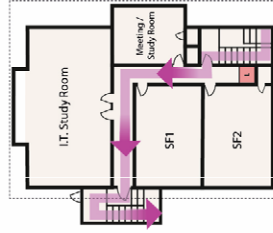
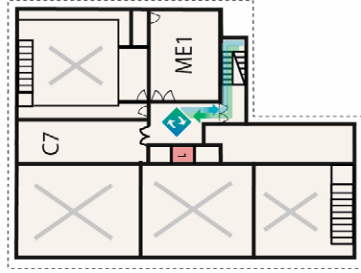


*First Floor Overleaf

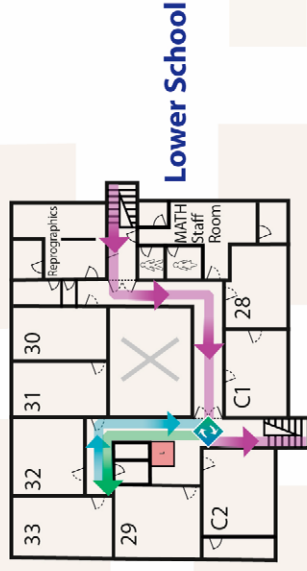
Kimberley School Map

First Floor

Arts Block



Sixth Form Centre



Lower School

DT Block

